

viv  
VLADMIVA

 **orthodontic**  
**MATERIALS**



[www.vladmiva.ru](http://www.vladmiva.ru)







## DEAR DENTISTS!

Company «VladMiVa» is producing the materials for specialists of almost all fields of dentistry. A short time ago, we've started to develop and release special materials for orthodontists.

Orthodontics is the special area of dentistry, the purpose of which lies in the correction of anomalies of the dentition. More than 90% of world population today has a maxillary pathology. The orthodontist identifies and solves problems associated with the dentition that interfere with the chewing or speech function, which worsens the appearance of patients.

For the average person, this sounds like «bite correction», «alignment of teeth», and for a specialist it is an opportunity to help the patient solve the problem with the help of modern methods, applying the latest technologies and materials. For several millennia of its existence, orthodontics has become one of the most popular and progressive areas of dentistry - with the help of modern technology, you can not only align the teeth of a child or teenager, but also an adult.

At a time when orthodontists are developing new methods and concepts for treating patients, «VladMiVa» is working to improve materials and structures that allow specialists to work efficiently, ergonomically and achieve successful results.

«VladMiVa» is always moving with the time, creating modern products for national dentistry.

In this catalog are presented our new special developments and also known materials, which can be used in orthodontists practice.

**Have a nice work!**





# CONTENT

## BRACE FIXATION

Belabond - Ortho .....	2
Liquid and gel for enamel etching .....	3

## TOOTH'S HARD TISSUES RESTORATION

Belak - F .....	4
Nanofluor .....	5
Belagel - Ca/P .....	6
Belagel - F .....	6
Fissulight.....	7

## IMPRESSION MATERIALS

Beloprint .....	8
Beloprint - Time .....	8
Beloprint - Chromatic .....	9
Belast .....	10
Phototray.....	11
Orthosol.....	12
Megadez - Ortho .....	13

## DENTAL TECHNICAL MATERIALS

Gypsum .....	14
Isalgin.....	15
Belowax.....	16
Belowax Orthodontic .....	17
Orthofix - Aqua .....	18
Poliset paste.....	19
Poliset powder.....	19
Belacryl - Ortho.....	20
Nolatek - Ortho.....	21
Wire for orthodontic devices .....	22
Aluminium wire for splinting .....	22
Ligature wire for splinting.....	23





# BELABOND - ortho

Light-cured thermochromic adhesive

## PURPOSE

An adhesive for fixing metal or ceramic braces to the tooth enamel, during orthodontic treatment.

## FEATURES

One-component light-cured adhesive «Belabond» - ortho contains methacrylate oligomers, nanofiller, polymerization activators, stabilizers, solvents.

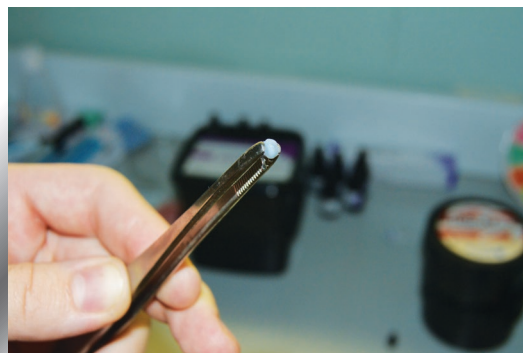


Perfect fixation of metal and ceramic brace



Short time of curing

## Comfortable to use

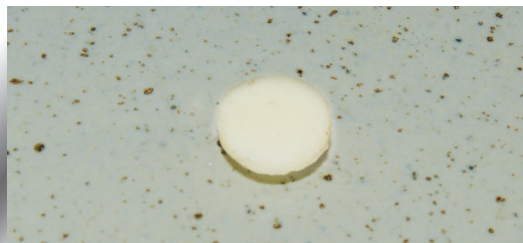


Applying the adhesive on brace

## The temperature is control by color



A sample of «Belabond» - ortho at a temperature 25°C (Room temperature)



A sample of «Belabond» - ortho at a temperature 33°C (Oral cavity temperature)

- changing color allows you to remove the excess of material;
- easy to clean teeth after brace removal.

## PACKAGE

Code	Package	Volume
00000000000	adhesive	1 ml
00000000000	primer	3 ml
RC № FSR 2007/00999 dated 26.09.2017		





# LIQUID and GEL

for enamel etching



## PURPOSE

- gel for enamel etching before filling carious cavities of prepared tooth;
- liquid for etching teeth enamel surface, during braces fixation.

## FEATURES

Liquid and gel for enamel etching contain 37% phosphoric acid, gelation agent and dyestuff. In 30-40 seconds after applying on the surface of enamel, material form microroughness, which increases adhesive strength of tooth hard tissues with filling material.

Set for etching contains:

- **gel for enamel etching;**
- **liquid for etching surface of enamel.**



Possess high thixotropy



Gels do not flow onto the gums and are easily washed off with water



Enamel etching by gel

## PACKAGE

Code	Package	Volume
00000000025	gel	5 ml
00000007342	gel	20 ml
00000012187	gel	100 ml
00000055950	liquid	10 ml

RC № FSR 2008/03513 dated 02.10.2017





# BELAK - F

## Fluorizing one-component varnish



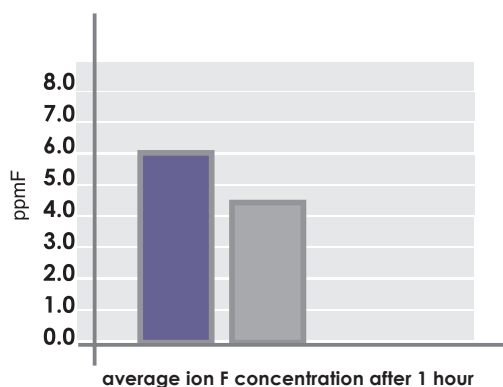
### PURPOSE

- prevention of caries of kids and teenagers;
- remedy for hyperesthesia of teeth, for wedge-shaped defects, traumatic injuries of enamel and other non-carious lesions;
- after removal braces and enamel polishing;
- after removal of dental plaque during professional hygienic teeth cleaning.

### FEATURES

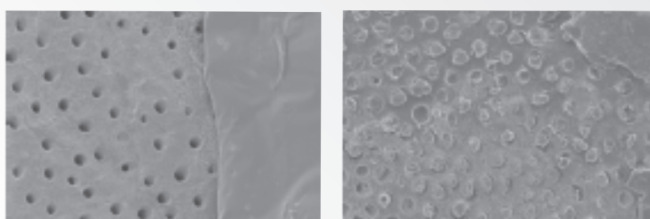
**«Belak-F» white.** It contains kalium fluoride, film coating agent, solvent. Fluorine ions, containing in material straighten teeth's enamel, reduce penetrance and prevent teeth from carious.

**«Belak-F» transparent.** It contains compound of fluorine of new generation (amine fluoride), antiseptic component, nature film coating agent and solvent. Fluorine ions, containing in material straighten teeth's enamel, reduce penetrance and prevent teeth from carious.



- «Belak-F» transparent
- «Belak-F» white

### «Belak-F» penetrates the canals and seals them



Tooth's surface (electron-ion scanning microscope «Quanta 200 3D»)

### PACKAGE

Code	Package	Volume
00000000010	varnish	25 ml
00000015719	varnish (transparent)	25 ml

RC № FSR 2010/07667 dated 26.09.2017



# NANOFLUOR

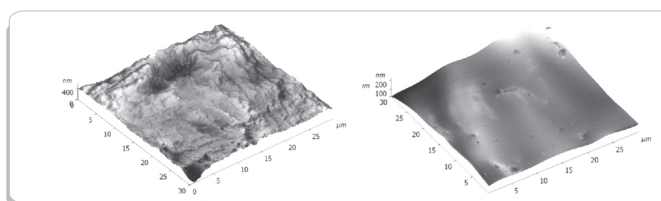
Fluoride dental varnish based on natural resins and nanodispersible hydroxyapatite



## PURPOSE

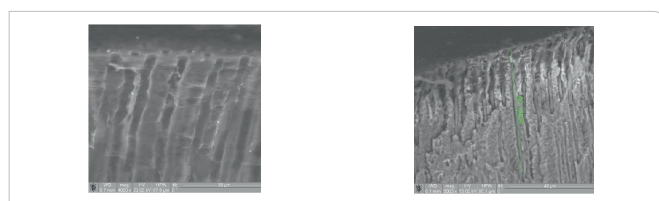
- deep fluoridation and acceleration of remineralisation of dentine and enamel;
- during prophylactic and treatment primary and secondary caries, decay caries, root caries;
- during treatment wedge-shaped defects;
- after removal of dental plaque during professional hygienic teeth cleaning;
- after removal of braces and enamel polishing;
- after curettage of periodontal pockets to protect tooth neck area from cervical hypersthesis;
- during treatment of teeth hypersthesis after application etching (restoration by composite materials, fissure hermetization, brace installation);

- in case of abrasive damage of enamel and dentine as result of improper teeth brushing or in case of tooth damage;
- during processing of contact surface of teeth with non removable orthopedic constructions;
- during processing of «alive» stump of preparation tooth before non removable prothesis fixation;
- during treatment and prophylactic of caries of kids and teenager: make temporary tooth maintenance procedure before the permanent teeth advents, fissure hermetization in stage of it's maturation, in case of deep pigment fissures of permanent teeth;
- before filling for isolating deep tooth's cavities;



Scan of tooth stone surface on the atomic-power microscope «Ntegra Aura»

Scan of tooth stone surface, previously covered by varnish «NanoFluor» on the atomic-power microscope «Ntegra Aura»



Open dentine canals

Transversal dentine chip, which surface previously covered by varnish «NanoFluor»

## FEATURES

Varnish «NanoFluor» contains:

- amine fluoride and sodium fluoride, increasing enamel resistance from acids attack. amine fluoride - new generation organic compound of fluoride, having fluoride overactivity with long-term therapeutic action desired content of fluoride components, making momentary teeth isolating from different kinds of irritations;
- nature resin, having antiseptic and antibacterial properties. able to form thin and hard film within 40-60 sec, which is not influenced in adhesion of restoration materials to dentine;
- nanodisperse colloidal hydroxyapatite, which able to restore mineral structure of tooth enamel, remineralization of dentine of deep carious cavity and normalization pulp functions;
- chlorobutanol, which has a moderately distracting, anti-inflammatory and antiseptic effect.

## PACKAGE

Code	Package	Volume
00000007472	varnish	5 ml
	solvent	5 ml

RC № FSR 2007/00836 dated 22.11.2017





## BELAGEL - Ca/P

Remineralizing gel



### PURPOSE

- prevention of caries at its initial stage of white spot;
- remineralization of enamel in case of non-carious lesions arising during the period of tooth formation;
- hyperesthesia of hard tooth tissues, enamel hypoplasia, erosion of hard tooth tissues, etc.

### FEATURES

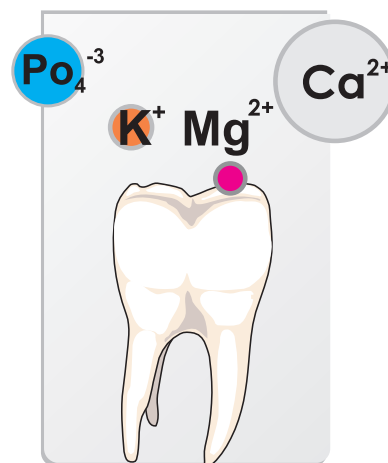
The constituent components of the «Belagel - Ca/P» remineralizing gel are ions that make up healthy tooth enamel, actively penetrate the enamel and dentin of the affected teeth and contribute to their mineralization.

When the gel is applied to the tooth surface and dried, a film is formed, remineralizing the tooth tissue within 3-5 hours. For a longer application, the gel is used with a tray.



**1 g BELAGEL - CA/P contains:**

11 mg calcium ions  
5 mg phosphorus  
1,8 mg kalium ions  
0,9 mg magnesium ions



### PACKAGE

Code	Package	volume
00000013021	gel	10 g
00000037853	gel (brush pen)	2,5 ml
00000001149	gel	5 ml
00000000000	gel	500 ml
RC № FSR 2009/06282 dated 23.10.2017		

## BELAGEL - F

Fluorizating gel



### PURPOSE

- Prevention of caries at:
- hyperesthesia of hard tooth tissues;
- wedge-shaped defects;
- traumatic damage to enamel and other non-carious lesions.

### FEATURES

«Belagel - F» - the material is based on natural polysaccharides; it is characterized by a high penetrating ability of fluoride ions (F⁻) in the tooth tissues, stimulates the mineralization of hard tooth tissues, promotes the restoration of tooth enamel and protects teeth from caries.

### PACKAGE

Code	Material   Package	volume
00000000014	gel	5 ml
00000045530	gel	10 g
00000000000	gel (brush pen)	2,5 ml
00000000000	gel	500 ml
RC № FSR 2009/06282 dated 23.10.2017		



# FISSULIGHT

Light cured sealant for fissures



## PURPOSE

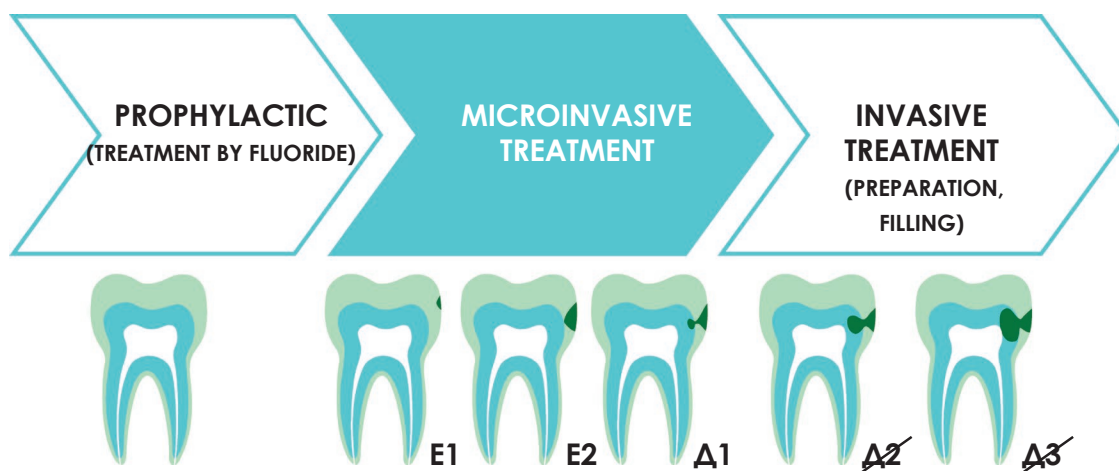
Micro-invasive treatment of carious lesions on the vestibular surfaces of enamels (caries in the «white spot» stage, after removing braces), as well as in the proximal area.

## FEATURES

The kit «Fissulight» includes: gel for enamel etching based on hydrochloric acid (15%); liquid for drying hard dental tissue; one-component light-cured transparent low viscosity sealant, possessing high penetrating power.

The sealant helps to restore the integrity of the enamel with maximum preservation of healthy tooth tissues, which provides increased resistance to acidic conditions and stops further development of caries. The microinvasive treatment of caries with the «Fissulight» kit is recommended if the defect of the enamel and / or dentin on the x-ray image is visualized in stage E1, E2, D1. When using sealant, the enamel surface should be properly dried.

When using the «Fissulight» kit for treating carious lesions on the vestibular surfaces, you can use liquid cofferdam «TempoPhot».



- Eliminates the effects of wearing non-removable orthodontic structures (braces)
- Saves healthy tooth tissues
- Stops the progression of carious processes
- Improves aesthetics smile

## PACKAGE

Code	Package	Volume
00000053106	transparent paste	1 ml
	drying liquid	1 ml
	gel for etching	1 ml
RC № FSR 2011/11998 dated 13.02.2018		





# BELOPRINT

Alginate impression material



## PURPOSE

Making impressions in prosthesis and orthodontics.

## FEATURES

«Beloprint» - non-dusting powder with a short wetting time, which includes sodium alginate, calcium sulfate, food flavoring and filler.

Optimal compatibility with gypsum allows you to get a solid smooth surface of the plaster model.



The print has high elasticity and durability



Accurately reproduces the relief of soft and hard tissues of the oral cavity



Provides high quality surface plaster model with a clear reproduction of parts



Does not contain preservatives and disinfectants, does not irritate the tissues of the oral cavity

## PACKAGE

Code	Package	Volume
00000004805	powder	450 g
00000004871	powder	800 g
RU № FSR 2010/07934 dated 26.09.2017		



Pour a water to powder



Mix, until it becomes a homogeneous paste.

# BELOPRINT time

## PURPOSE

Liquid for increasing the working time duration alginate impression materials.



- one drop increases the working time of alginate impression material by 10-20 seconds;
- does not change physical properties of an alginate print (durability, elasticity);
- does not affect the curing time of the material in the mouth;
- biologically compatible, does not cause an allergic reaction;
- it is extremely necessary for the dentist in the summer or when working with children.

## PACKAGE

Code	Package	Volume
00000018843	liquid	30 ml
RC № FSR 2010/07934 dated 26.09.2017		



# BELOPRINT chromatic

Alginate impression material with indication of working phases



## PURPOSE

Making impressions in prosthetics and orthodontics.

## FEATURES

«Beloprint»-chromatic - non-dusting powder with a short wetting time, which includes sodium alginate, calcium sulphate, filler, structuring indicator, food flavoring enhancer.

The introduction of the indicator into the composition allows you to visually control the individual stages of structuring the material, which facilitates the work of the dentist and allows you to minimize the exposure time of the impression material in the patient's oral cavity.

## Indication of material structuring stages

(chromatic three-phase transition)



**Violet**  
Mixing stage



**Purple**  
filling the impression spoon



**Blue**  
introduction to the cavity  
patient's mouth



The color indicator allows you to visually monitor the stages of structuring the material



Easy mixing



High strength and stability to warp



Impression from «Beloprint»-chromatic

## PACKAGE

Code	Package	Volume
00000007474	powder	450 g
RC № FSR 2010/07934 dated 26.09.2017		





# BELAST

Silicone impression material of condensation type



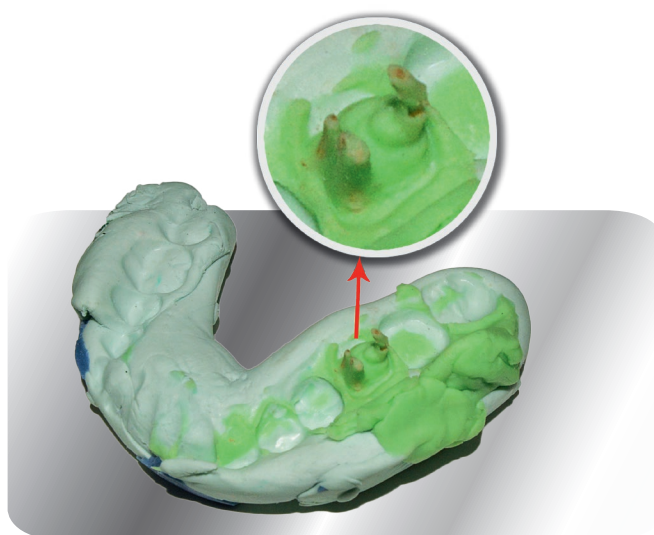
## PURPOSE

«Belast» **HIGH VISCOSITY** (type 0-hard and type 1-soft) – obtaining a primary base impression using single-layer and two-layer technologies in the manufacture of modern types of prostheses. To determine the bite «Belast» applied independently.

«Belast» **LOW VISCOSITY** (type 3) – obtaining a secondary detailed impression of a two-layer technology in the manufacture of modern types of prostheses, as well as to obtain a functional impression of an edentulous jaw in an individual spoon and clarify the boundaries of the prosthetic field of a complete denture.

«Belast» **MEDIUM VISCOSITY** (type 2) – obtaining impressions in partial defects of the dentition with high mobility of teeth: with periodontal disease, with undercuts, with fractures of the jaw bones, as well as with the manufacture of prostheses and orthodontic appliances for children.

«Belast» **CATALYST** – curing (vulcanization) of impression materials of «Belast» condensation-type silicone materials (high viscosity, medium viscosity, low viscosity).



The «Belast» material exactly repeats the anatomical shape of the tooth.

«Belast» **CATALYST** - universal gel-like catalyst for condensation silicone materials in obtaining accurate impressions of various hard and soft tissue prosthetic fields.

When mixing silicone materials («Belast» HIGH VISCOSITY, «Belast» MEDIUM VISCOCITY, «Belast» LOW VISCOSITY) with catalytic gel elastic vulcanizer is formed. The dosage of the catalyst is carried out in accordance with the attached instructions for use of the base material.

The working time and cure time of an imprint depends on the amount of gel catalyst. An increase in the amount of catalyst and an increase in temperature accelerate, while a decrease in the amount of catalyst and a decrease in temperature slow down the curing of the silicone mass. It is not recommended to increase the dosage of the catalyst by more than 25% of the norm - this may entail a change in the properties of the material.

## PACKAGE

Code	Package	Volume
00000001387	High viscosity (type 0)   dense consistency	910 ml
00000000000	High viscosity (type 1)   high viscosity consistency	910 ml
00000004801	Low viscosity (type 3)   low viscosity consistency	140 ml
00000004799	Medium viscosity (type 2)   medium viscosity consistency	80 ml (130 g)
00000047380	Cross-functional catalyst	60 ml
RC № FSR 2011/11999 dated 23.10.2017		



## FEATURES

## PHYSICAL AND MECHANICAL PROPERTIES OF THE MATERIAL "BELAST"

Specifications and properties Material	Consistency		Line thickness (mm)	Linear shrinkage (%)	Recovery after deformation (%)	Compression deformation (%)	
	min (mm)	max (mm)				min (mm)	max (mm)
<b>HIGH VISCOSITY</b> (type 0, type 1)	28	30	0,075	0,5	99	2	4
<b>LOW VISCOSITY</b> (type 2)	34	36	0,02	0,65	98,7	3	6
<b>MEDIUM VISCOSITY</b> (type 3)	38	40	0,02	0,9	97	5	9
<b>requirement ISO 4823</b>	31	40	0,02 - 0,075	not more 1,5	not more 96,5	0,8	20

## WORKING CHARACTERISTICS OF THE MATERIAL "BELAST"

Material	Mixing time	Working time	Curing time
<b>HIGH VISCOSITY</b> (type 0, type 1)	30 sec.	1 min. 30 sec.	3 min.
<b>LOW VISCOSITY</b> (type 2)	30 sec.	1 min. 30 sec.	3-4 min.
<b>MEDIUM VISCOSITY</b> (type 3)	30 sec.	2 min	4-5 min.

## PHOTOTRAY

Light-cured polymeric material



## PURPOSE

- production of individual and functional impression spoons;
- accurate impressions for partial and full prosthetics;
- occlusion registration.

## FEATURES

The material «Phototray» is a highly filled (> 85%) paste based on methacrylate oligomers, which consists of: a modified fine-dispersed filler, an initiating system, a radical polymerization stabilizer, a food coloring and a flavour.

- the material is preformed in the form of ready-to-use plates;
- easily modeled and shaped;
- it has high bending strength;
- approaches the majority of modern polymerization lamps;
- it has no unpleasant odors;
- does not stick to hands and tools;
- possesses high dimensional stability.

## PACKAGE

Code	Package	Volume
000000000000	Plates	25 pcs



Plate, placed on a gypsum model





## ORTHOSOL

Set of liquids for processing dental impression materials



### PURPOSES

**«Orthosol»-Cleans** - for cleaning dental instruments from alginate and plaster impression materials (concentrate).

**«Orthosol»-Impress** - to maintain the quality of prints from alginate materials (delays dehydration and protects against dimensional deformations).

**«Orthosol»-Dent** - for cleaning removable dentures from bacterial plaque, food debris or fixing materials, as well as for the storage of dentures (concentrate).

### FEATURES

**«Orthosol»-Cleans** - high quality of cleaning provides the component of the liquid component, which forms water-soluble complexes with calcium ions and other bivalent ions.

The solution is used to remove gypsum and alginate from impression spoons, mixing spatulas, plaster knives, mixing bowls (including vacuum mixing devices), orthodontic regulators, etc.

**«Orthosol»-Impress** contains a film former in an easily evaporating filler, maintains the quality of prints from alginate materials, which makes it possible to delay the casting of a plaster cast for up to 3 days and allows you to cast a plaster model and duplicate using one alginate impression. When storing alginate material prints, significant volumetric changes occur as a result of water loss and the phenomenon of syneresis. «Orthosol»-Impress delays dehydration and protects prints from all types of alginate materials from dimensional deformations. You can store the processed print in a tightly closed package for three days.

**«Orthosol»-Dent** contains a cationic quaternary ammonium compound, which determines the microbicidal and microbostatic effect of the concentrate, the salt of sorbic acid, which has a fungistatic effect. Odorant creates a feeling of freshness in the mouth when wearing dentures.

#### «Orthosol»-Dent are using for:

- removing bacterial plaque and stains from the construction;
- prevention of inflammatory diseases of the oral cavity in people using removable dentures;
- ensure clean mouth and fresh breath.



### PACKAGE

Code	Package	Volume
00000003524	<b>Cleans</b>   liquid	125 ml
00000025870	liquid	500 ml
00000004660	<b>Impress</b>   liquid	125 ml
00000025871	liquid	500 ml
00000025868	<b>Dent</b>   liquid	1 L
00000026073	liquid-spray	500 ml
RC № FSR 2009/04654 dated 01.12.2017		



# MEGADEZ ortho

## Desinfectant



### PURPOSES

Disinfection of dental impressions made of alginate, silicone materials, polyester resin, denture blanks made of ceramics, metals, plastics, corrosion-resistant articulators, impression trays.

### FEATURES

The composition as an active ingredient includes: propanol-1 - 30%, propanol-2 - 35%, N, N-didecyl-N methylpoly (oxyethyl) ammonium propionate - 0.39%, dodecyl dipropylene triamine - 0.30%. In addition, the composition includes flavoring, coloring and water.

The agent has antimicrobial activity against gram-negative and gram-positive bacteria (including tuberculosis pathogens - tested for *Mycobacterium terrae*), pathogenic fungi (pathogens of candidiasis) and viruses (causative agents of parenteral hepatitis B, C, D, HIV infection, including type A H5NI, H1NI, herpes, cytomegaly).

The prints, immediately after removal of the patient from the oral cavity, are washed under running water for 30 seconds, then immersed in a solution of the product or treated with an irrigation method («Megadez» Ortho Spray).

«Megadez» ortho can be used to disinfect dental impressions repeatedly during a work shift or on a working day, if its appearance has not changed. At the first signs of changes in appearance (color change, clouding of the solution, precipitation, etc.), the solution must be replaced. The best disinfection results are achieved when the impression is immersed in the Ortho Megadesis solution or when sprayed «Megadez» Ortho spray directly on the print.



After receiving the impression, gently rinse it, removing any residual saliva



Get rid of excess moisture and immediately sanitize the print

### PACKAGE

Code	Package	Volume
00000049901	liquid-spray	500 ml
00000043380	liquid	1 L
00000044667	liquid	3 L
00000044668	liquid	5 L
RC.77.99.88.002.E.000524.02.19 dated 08.02.2019		





# GYPSUM

for making the diagnostic and working models



## PURPOSES



**DENTALCAST 10 type 2** It is used in prosthetic dentistry and surgery for the manufacture of diagnostic, replica casts and immobilized dressings.



**DENTALCAST 30 type 3** It is used in dentistry to obtain collapsible models of the jaws and the manufacture of master models of the dentition, as well as diagnostic and working models of the jaws in the technology of removable dentures.



**DENTALCAST 30 arti type 3** for fixing models in the articulator.



**DENTALCAST 50 type 4** is used for:

- production of combined collapsible plaster models of jaws and dies for prosthetics with porcelain and metal-ceramic prostheses;
- casting working models used in the manufacture of inlays, crowns and bridges;
- manufacturing models of complete and partial fixed prostheses;
- manufacture of models of implantable dentures.



**DENTALCAST 40 type 4** to form the base of the working model.

## FEATURES

Name of material	Ratio water/powder	Setting and hardening time min	Linear expansion after 2 hours, %	Compressive strength after 1 hour, MPa	Color
<b>DENTALCAST 10 TYPE 2</b>	60ml to 100g powder	not less than 3,0 - not more than 30,0	not more than 0,3	not less than 9,0	white
<b>DENTALCAST 30 TYPE 3</b>	30ml to 100g powder	8-14	not more than 0,2	not less than 20	blue
<b>DENTALCAST 30 ARTI</b>	30ml to 100g powder	3,5-5,5	not more than 0,1	not less than 20	white
<b>DENTALCAST 50 TYPE 4</b>	22-24ml to 100g powder	8-20	not more than 0,15	not less than 35	golden brown
<b>DENTALCAST 40 TYPE 4</b>	22-24ml to 100g powder	8-20	not more than 0,15	not less than 35	graphite

## PACKAGE

Code	Package	Volume
00000000000	packet	20/25 kg
00000000000	plastic container	5/10 kg



# ISALGIN

Separating dental varnish



## PURPOSES

Forms a film on the surface of the plaster model and prevents the merging of gypsum with plastic.

## FEATURES

Separating varnish «Isalgin» is made on the basis of sodium alginate.

The coating of the plaster mold with varnish is carried out after the wax has been removed from the surface of the plaster and the model (shape) is well degreased by boiling in water. The required amount of release varnish is poured into a small vessel and with a brush it is evenly applied to the still warm surface of the plaster model.



**Optimum consistency ensures easy application**



**Good adhesive function to gypsum**



**Small amount provides effective insulation**



**Doesn't contain formaldehyde**



**Bacteriostatic and bactericidal**



Applying «Isalgin» varnish on gypsum model

## PACKAGE

Code	Package	Volume
00000001233	varnish	125 ml
00000018711	varnish	500 ml
00000025923	varnish	1 L
00000000000	varnish - spray	500 ml
RC № FSR 2008/02236 dated 23.10.2017		





# BELOWAX

Dental wax



Applying «Belowax» basic

## PACKAGE

Code	Package	Volume
00000006999	(soft) plates	500 g
00000024008	(hard) plates	500 g
RU № FSR 2007/00962 dated 26.09.2017		

## BASIC

### PURPOSES

Modeling the bases of removable dentures, making bite patterns, molding impression spoons, basic spoons, and also their parts.

### FEATURES

Basic wax has two kinds:

- **soft;**
- **hard.**

Translucent wax plates without internal stresses in a softened state are easily connected to each other without sticking to the fingers.

The wax is easily molded in a heated state and is treated at room temperature with a sharp tool. After a slight heat by the flame, the wax plates have a smooth surface.

In the manufacture of a prosthesis, wax is easily removed without residue with boiling water from plaster molds, leaves no marks on porcelain and plastic teeth and does not stain the plastic of the prosthesis.

The wax has a slight thermal linear expansion. The wax base «Belowax» does not cause irritation of the tissues of the oral cavity.

## STICKY

### PURPOSES

Pasting of links of metal prostheses when preparing them for soldering, and also used when repairing removable prostheses and joining fragments of gypsum models.

### FEATURES

Contains natural and synthetic waxes and rosin, providing good adhesion to metal and plaster (not less than 0.9 MPa). Dental wax has the necessary strength, has a convenient form for use (sticks). The dropping point at a temperature not lower than 65°C, at a temperature of 500°C - not more than 0.2%.

In a heated state, sticky wax spreads well and accurately connects the elements of the prosthesis.

## PACKAGE

Code	Package	Volume
00000012637	Cylindrical sticks	50 g (10 pcs)
RC № FSR 2007/00962 dated 26.09.2017		





# BELOWAX

Dental wax



## ORTHODONTIC

### PURPOSES

Prevents irritation of the mucous membranes, which may occur as a result of friction caused by braces.

### FEATURES

Consists of biologically inert natural ingredients (beeswax, resin plants, oil).

Orthodontic wax is used to reduce friction of the protruding parts of the braces. To apply the wax, soften it with your fingers and stick it on the rubbing part of the bracket system. Thanks to its optimum consistency, the wax is held securely on the braces. Specially selected wax color and degree of transparency make it almost imperceptible.



**Produced from the natural**



**Optimal fixation**



**Easy to remove**



**Perfect aesthetic**



Use of «Belowax» orthodontic for closing the projecting area of the bracket system

### PACKAGE

Code	Package	Volume
00000056071	sticks	4 g x 3 pcs
RC № FSR 2007/00962 dated 26.09.2017		





# ORTHOFIX - aqua

Dental cements for orthopedics



## PURPOSES

To improve the quality of orthopedic treatment of patients using fixed dentures, increase the time of use of crowns and bridges, a system of dental water-curing cements «Orthofix-Aqua» has been developed, which includes:

- **glass-ionomer;**
- **polycarboxylate;**
- **calcium containing for temporary fixation.**

Cements «Orthofix-Aqua» are designed for permanent (S and P) and temporary (K) fixing crowns, inlays, pins, bridges, orthopedic and orthodontic structures.

## FEATURES

«Orthofix-Aqua» **CALCIUM CONTAINING** It is formed by mixing calcium powder with distilled water. The use of cement «Orthofix-Aqua» for temporary fixation facilitates the procedure for the patient to get used to new orthodontic structures in the oral cavity. It is used for aesthetic purposes for fixing temporary crowns for the period of production of permanent and temporary filling and sealing of the tooth cavity.

«Orthofix-Aqua» **POLYCARBOXYLATE** is a mechanical mixture of modified zinc oxide and dry polyacrylic acid. «Orthofix-Aqua» polycarboxylate has good adhesion to dentin, enamel and to the main structural dental materials, minimal solubility and shrinkage, high strength. Cement powder «Orthofix-Aqua» polycarboxylate is easily mixed with water to obtain the desired consistency. When fixing crowns and bridges does not cause pain to the patient.

«Orthofix-Aqua» **GLASS-IONOMER** it is a mechanical mixture of aluminum fluorosilicate glass and dry polyacrylic acid. Glass ionomer cement powder is easily mixed with water to obtain the desired consistency.

It has good adhesion to enamel and dentin, low solubility, high mechanical strength, gradually releases fluoride ions, which prevents the development of secondary caries.

Fixation is carried out in a conventional manner, the time of hardening of cement in the oral cavity is 5-6 minutes. Hardened excess cement is removed after 10-12 minutes after fixation of dentures.

## PACKAGE

Code	Package	Volume
00000000087	K   powder	30 g
00000055274	K   powder	80 g
00000055275	K   powder	200 g
00000000089	P   powder	30 g
00000000088	S   powder	30 g

RC № FSR 2008/02584 dated 19.12.2017



# POLISSET

Polishing material for dental products

## PASTE



### PURPOSES

«Poliset» pastes are used for:

**POLISSET №1** - polishing of stainless steel, copper, nickel and chromium-cobalt alloys;

**POLISSET №2** - plastic polishing;

**POLISSET №3** - polishing ceramic and plastic materials;

**POLISSET №4** - polishing plastic details, used in dentistry.

### FEATURES

Poliset pastes for polishing dental products contain various abrasives, surfactants and binders.

Paste «Poliset № 4» based on a water contains abrasives of different nature, providing effective polishing of plastics without scratching the products.



**Comfort pack**



**Efficient to use**



**Easy to wash**



**Polishing to a specular gloss**

### PACKAGE

Code	Package	Volume
00000034836	<b>№1</b>   paste	100 g
00000034837	<b>№2</b>   paste	100 g
00000034838	<b>№3</b>   paste	100 g
00000001632	<b>№4</b>   paste	400 g

RC № FSR 2008/02238 dated 12.12.2017

## POWDER



### PURPOSES

Polishing plastic prosthesis.

### FEATURES

«Poliset» powder contains several abrasive components, having different characteristics and strength.



**Doesn't leave scratches**



**Low consumption for use**



**Quick result**

### PACKAGE

Code	Package	Volume
00000012037	powder	2 kg
00000001303	powder	4 kg

RC № FSR 2008/02238 dated 12.12.2017





# BELACRYL - ortho

Polymeric material for orthodontic appliance

## PURPOSES

Manufacture and repair of orthodontic appliances and structures.

## FEATURES

The material is produced in the form of two components - a powder containing methacrylic acid polyesters and a catalyst for the polymerization reaction of benzoyl peroxide, and a liquid containing methyl methacrylate monomer, which from a polymer is formed after mixing. If necessary, the polymer can be colored blue, red and / or yellow with the help of dye concentrates.



- ✓ High manufacturability, simplicity and speed of production
- ✓ Good polishability, high color fastness, no pores
- ✓ Functional durability
- ✓ Low level of toxicity, low water absorption



Orthodontic construction

## PACKAGE

Code	Package	Volume
00000055223	liquid	250 ml
	powder	500 g
	blue concentrate	12 ml
	red concentrate	12 ml
	yellow concentrate	12 ml

RC № RZN 2015/2736 dated 28.02.2018



# NOLATEK - ortho

Light-cured basic material



## PURPOSES

- definition of a constructive bite;
- making caps;
- manufacture of orthodontic appliances.

## FEATURES

The base material «Nolatek» is made on the basis of copolymers of polyesters of methacrylic and dimethacrylic acids, modified with composite, and refers to light-cured plastics.



**Conveniently modeled (plate consistency)**



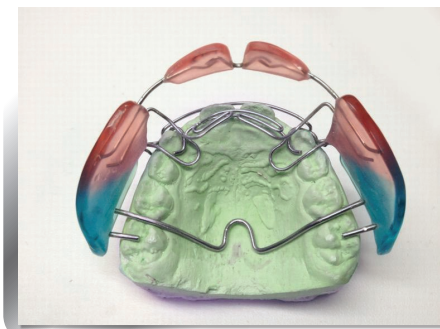
**Light cured (according to manufacturer's instructions)**



**Bioinert material (does not cause allergic reactions)**

The polymer mass «Nolatek» can be manually modeled directly on a plaster model, previously treated with lacquer by separating dental «Isalgin» (or similar). In working process, the material retains its shape well. The material is polymerised with light with a wavelength of 360 nm to 500 nm. Polymerization time depends on lamp power and time from 2 to 10 minutes. In laboratory photopolymerization agents, the material will be polymerized for 6 minutes alternately on both sides.

## Facing orthodontic appliances using the material «Nolatek-ortho»



Fraenkel's appliance



Derichsweiler's appliance



Nance's appliance

## PACKAGE

Code	Package	Volume
00000052553	polymer mass: transparent, yellow, red, green, blue	30 g x 5 pcs
	adhesive	5 ml
	varnish	5 ml
RC № RZN 2015/2736 dated 28.02.2018		





# WIRE FOR ORTHOPEDIC APPLIANCES



## PURPOSES

Making orthodontic appliances and clammers.



From nitinol



Stainless steel



Perfect strength characteristics

## PACKAGE

Code	Ø, mm / L, mm
00000024908	0,6 / 5,0
00000024971	0,8 / 5,0
00000024909	1,0 / 5,0
00000024972	1,2 / 5,0
00000000000	0,4 / 5,0 (soft)
00000000000	0,4 / 5,0 (hard)
RC № FSR 2011/10208 dated 05.03.2011	



Orthodontic appliance made from wire.

# ALUMINUM WIRE

for dental splinting



## PURPOSES

Applying dental splints in case of jaw fractures.



Optimal elasticity



Reliable form keeping

## PACKAGE

Code	Ø, mm / L, mm
00000024907	2,0 / 5,0
RC № FSR 2011/10212 dated 12.11.2018	



Dental splint maded from aluminum wire



# LIGATURE WIRE

for dental splinting



## PACKAGE

Code	Ø, mm / L, mm
00000026147	0,5 / 5,0
RC № ФСР 2011/10212 dated 12.11.2018	

## PURPOSES

Maxillofacial deformities correction.



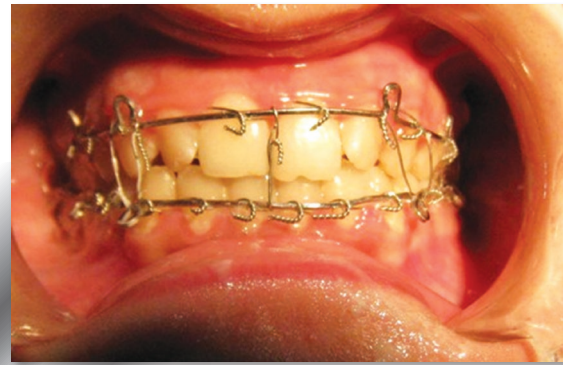
High degree of inertness



Perfect strength characteristics



Reliable form keeping



Orthodontic appliance made from ligature wire



## «Trade House «VladMiVa»

118, Sadovaya Str., Belgorod,

308023, Russia

tel./fax +7(4722) 200-555

export@tdvladmiva.ru

### our branches:

1-Krasnaya Str., lit. 2g,  
Ljubertsy, Moscow Region, 140000, Russia  
tel./fax +7(495) 565-42-43, 565-42-44  
ddvladmiva@gmail.com

27, Botanic Str.  
Orel, 302016, Russia  
tel./fax +7(4862) 72-54-60, 72-54-61  
orel@tdvladmiva.ru

21,1-Pushkarnaya Str.  
Kursk, 305029, Russia  
tel./fax +7(4712) 227-446, 227-445  
kursk@tdvladmiva.ru

29a, Zhukov micro-district  
Stary Oskol, 309512, Russia  
tel./fax +7(4725) 33-39-33, 39-05-03  
st\_oskol@tdvladmiva.ru

101, Working Str.  
Voronezh, 394049, Russia  
tel./fax +7(4732) 392-777, 392-780  
voronezh@vladmiva.ru

55a, St. Dimitrov Str.  
Bryansk, 241033, Russia  
tel./fax +7(4832) 595-446  
bryansk@tdvladmiva.ru

46, Demonstration Str.  
Tula, 300034, Russia  
tel./fax +7(4872) 70-13-20  
tula@tdvladmiva.ru

All products can be purchased  
in online shop

[www.tdvladmiva.ru](http://www.tdvladmiva.ru)